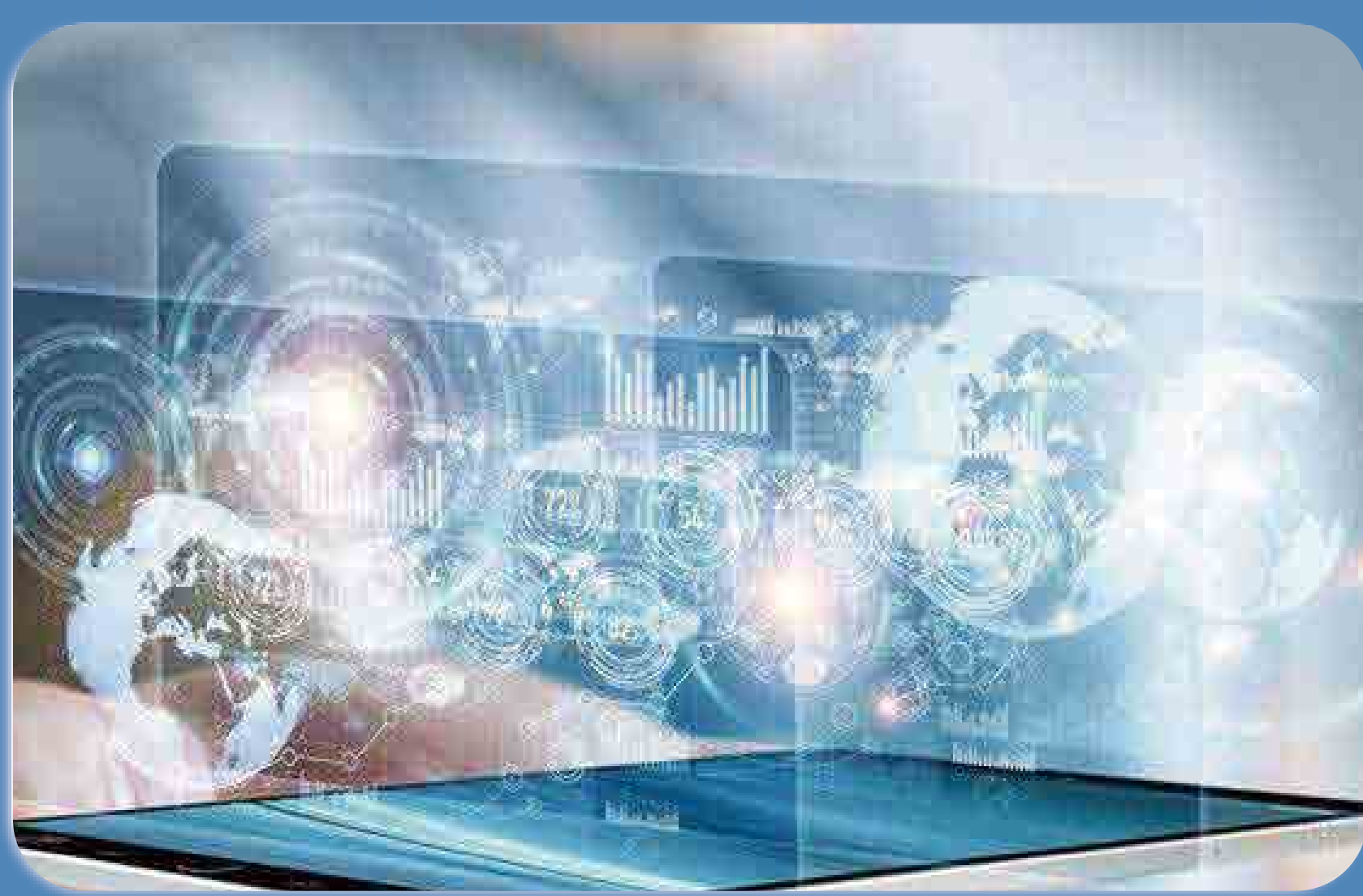
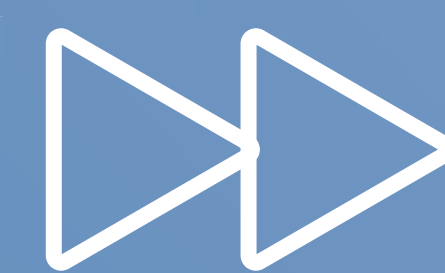


# IoT(Internet of Things) Antennas Product Manual





## Company Profile:

Shenzhen Superbat Electronics Co.,Ltd was established in 2008, we specialise in manufacturing RF antennas, coaxial cable assemblies and RF connectors, as well as providing coaxial cable customisation services. We provide high performance and costeffective solutions for RF users worldwide.

\*RF Antenna

\*RF Connector Adapter

\*RF Cable Assembly

\*RF Coaxial Cable



## What are our advantages?

### Reliable And Safe Quality

- Sturdy Shell
- Waterproof and Moisture-proof
- Eco-friendly and Non-toxic

### Installation-friendly

- Magnetic Mounting
- Perforated Mounting

### Excellent After-sales Service

- Good Service Attitude
- Cost-effective Solutions





## Antennas in IoT:

IoT enables intelligent identification, location, tracking, and management of items, meeting the information exchange needs between people, things, and objects. Wireless communication transmission is an important link in achieving the interconnection of all things. Antennas can convert electrical signals and electromagnetic signals to each other to realize the connection between IoT devices, while also enhancing the signal transmission power and coverage. Therefore, antennas play a crucial role in facilitating data exchange of IoT. Based on the specific needs and difficulties in the design and production of antennas, it is particularly important to cooperate with professional company.

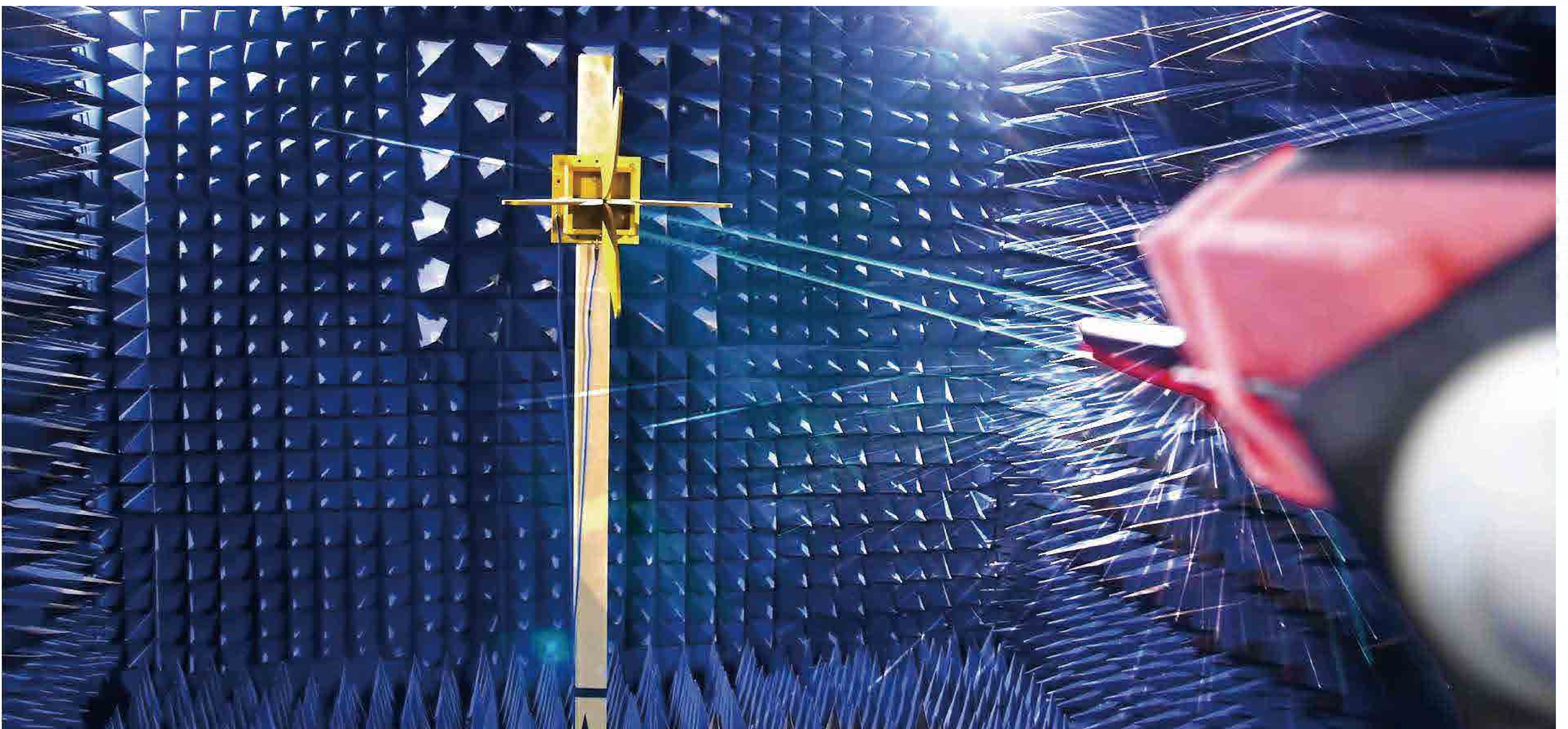


### Professional Testing Instrument

- \*Microwave Darkroom
- \*Vector Network Analyzer

### Professional Production Line

- \*Excellent Equipment
- \*Standardized Operation







GA45-300

GPS Antenna

VSWR:	<1.5
Gain:	2.0dBic
Impedance:	50Ω
Polarization:	RHCP
Frequency:	1575.42MHz±1.023MHz

4G LTE Antenna MAIN

VSWR:	<3.0
Gain:	2.5dBi
Impedance:	50Ω
Polarization:	Linear
Frequency:	698~2690MHz

4G LTE Antenna AUX

VSWR:	<3.0
Gain:	2.0dBic
Impedance:	50Ω
Polarization:	Linear
Frequency:	698~2690MHz

- \*Option of Cable Length☐
- \*Option of Connector Type☐
- \*Option of Cable Waven jacket☐

GA46-300

GPS Antenna

VSWR:	<1.5
Gain:	2.0dBic
Impedance:	50Ω
Polarization:	RHCP
Frequency:	1575.42MHz±1.023MHz

4G LTE Antenna

VSWR:	<2.0
Gain:	2.0dBi
Impedance:	50Ω
Polarization:	Linear
Frequency:	698~2655MHz

Cable Type: RG174

Mounting Type: Screw

- \*Option of Cable Length☐
- \*Option of Connector Type☐
- \*Option of Cable Waven jacket☐





VSWR:	<1.5
Gain:	2.0dBic
Impedance:	50Ω
Polarization:	RHCP
Frequency:	1575.42MHz±1.023MHz

VSWR:	<3.0
Gain:	2.0dBi
Impedance:	50Ω
Polarization:	Linear
Frequency:	698~2655MHz

Cable Type:	RG174
Mounting Type 1:	Adhesive Mount
Mounting Type 2:	Magnetic Mount

- \*Option of Cable Length ☐
- \*Option of Connector Type ☐
- \*Option of Cable Waven jacket ☐

## GA48-300

VSWR:	<1.5
Gain:	5.0dBic
Impedance:	50Ω
Polarization:	RHCP
Frequency:	1575.42MHz±1.023MHz

VSWR:	<3.0
Gain:	2.0dBi
Impedance:	50Ω
Polarization:	Linear

Cable Type:	RG174
Mounting Type 1:	Adhesive Mount
Mounting Type 2:	Magnetic Mount

- \*Option of Cable Length ☐
- \*Option of Connector Type ☐
- \*Option of Cable Waven jacket ☐







GA52-300

4G LTE Cellular Antenna

VSWR:	<2.0
Gain:	5.0dBic
Impedance:	50Ω
Polarization:	Linear
Frequency:	698~2700 MHz

GPS Antenna

VSWR:	<1.5
Gain:	2.0dBc
Impedance:	50Ω
Polarization:	RHCP
Frequency:	1575.42 MHz±1.023 MHz

Cable Type:	RG174
Mounting Type 1:	Adhesive Mount
Mounting Type 2:	Magnetic Mount

- \*Option of Cable Length☐
- \*Option of Connector Type☐
- \*Option of Cable Waven jacket☐

GA65-300

GPS Dielectric Antenna

VSWR:	<1.5
Gain:	2.0dBic
Impedance:	50Ω
Polarization:	RHCP
Frequency:	1561.098~1575.42 MHz

GPS LNA Antenna

VSWR:	<2.0
Gain:	18+2dB
Noise Figure:	<1.5dB
Supply Voltage:	2.2~5V DC
Current Consumption:	<25mA

LTE Antenna

VSWR:	<3.0
Gain:	2.0dBi
Impedance:	50Ω
Polarization:	Linear
Frequency:	698~2690 MHz

- \*Option of Cable Length☐
- \*Option of Connector Type☐
- \*Option of Cable Waven jacket☐







4A3-0151

4G LTE Antenna MAIN

VSWR:	<3.0
Gain:	2.5dBi
Impedance:	50Ω
Polarization:	Linear
Frequency:	698~2690 MHz

4G LTE Antenna AUX

VSWR:	<3.0
Gain:	2.0dBi
Impedance:	50Ω
Polarization:	Linear
Frequency:	698~2690MHz

Cable Type:	RG174
Mounting Type 1:	Adhesive Moun
Mounting Type 2:	Magnetic Mount

- \*Option of Cable Length

☐
- \*Option of Connector Type

☐
- \*Option of Cable Waven jacket

☐

4A3-0160

4G LTE Antenna MAIN

VSWR:	<2.0
Gain:	3.0dBic
Impedance:	50Ω
Polarization:	Linear
Frequency:	698~2700 MHz

4G LTE Antenna AUX

VSWR:	<2.0
Gain:	3.0dBic
Impedance:	50Ω
Polarization:	Linear
Frequency:	698~2700MHz

Cable Type:	RG174
Mounting Type 1:	Adhesive Mount
Mounting Type 2:	Magnetic Mount

- \*Option of Cable Length

☐
- \*Option of Connector Type

☐





4A3-0150

GSM Antenna

VSWR:	<3.0
Gain:	3.0dBic
Impedance:	50Ω
Polarization:	Linear
Frequency:	698~2690 MHz

Mechanical

Cable:	RG174
Weight:	63g
Material:	ABS
Mounting Method:	Screw
Connector:	SMA or customized

Environmental

Vibration:	10~55Hz
Relative Humidity:	Up to 95%
Environmentally Friendly:	ROHS
Operating Temperature:	-40℃~+85℃

\*Option of Cable Length☐

\*Option of Connector Type☐



4A3-0152

LTE Antenna

VSWR:	<3.0
Gain:	2.0dBic
Impedance:	50Ω
Polarization:	Linear
Frequency:	698~2690 MHz

Mechanical

Material:	ABS
Cable:	RG174 or others
Connector:	SMA or others
Amplification:	28±3db
Mounting Method:	Adhesive/Magnet

Environmental

Vibration:	10~55Hz
Relative Humidity:	Up to 95%
Environmentally Friendly:	ROHS
Operating Temperature:	-40℃~+85℃

\*Option of Cable Length☐

\*Option of Connector Type☐







### 4A3-0153

#### LTE Antenna

VSWR:	<3.0
Gain:	2.5dBic
Impedance:	50Ω
Polarization:	Linear
Frequency:	698~2690 MHz

#### Mechanical

Cable:	RG174
Radome Material:	ABS
Mounting Method:	Screw
Connector:	SMA/FAKRA or others

#### Environmental

Vibration:	10~55Hz
Relative Humidity:	Up to 95%
Environmentally Friendly:	ROHS
Operating Temperature:	-40°C~+85°C

\*Option of Cable Length



\*Option of Connector Type



### 4A3-0154

#### LTE Antenna

VSWR:	<2.0
Gain:	2.0dBi
Impedance:	50Ω
Polarization:	Linear
Frequency:	698~2690 MHz

#### Mechanical

Material:	ABS
Cable:	RG58 or others
Mounting Method:	Screw
Connector:	SMA or others

#### Environmental

Vibration:	10~55Hz
Relative Humidity:	Up to 95%
Environmentally Friendly:	ROHS
Operating Temperature:	-40°C~+85°C

\*Option of Cable Length



\*Option of Connector Type







4A3-0155

LTE Antenna

VSWR:	<3.0
Gain:	2.5dBic
Impedance:	50Ω
Polarization:	Linear
Frequency:	698~2690 MHz

Mechanical

Cable:	RG174
Radome Material:	ABS
Mounting Method:	Screw
Connector:	SMA/FAKRA or others

Environmental

Vibration:	10~55Hz
Relative Humidity:	Up to 95%
Environmentally Friendly:	ROHS
Operating Temperature:	-40℃~+85℃

\*Option of Cable Length ☐

\*Option of Connector Type ☐

4A3-0156

LTE Antenna

VSWR:	<2.0
Gain:	2.0dBi
Impedance:	50Ω
Polarization:	Linear
Frequency:	698~2655 MHz

Mechanical

Material:	ABS
Cable:	RG174 or others
Mounting Method:	Screw
Connector:	SMA or others

Environmental

Vibration:	10~55Hz
Relative Humidity:	Up to 95%
Environmentally Friendly:	ROHS
Operating Temperature:	-40℃~+85℃

\*Option of Cable Length ☐

\*Option of Connector Type ☐







4A3-0300

Electrical Characteristics

VSWR:	≤3.0
Gain:	2.76dBi
Impedance:	50Ω
Polarization:	Linear
Frequency:	824~2700 MHz

Mechanical performance

Connector Type:	SMA
Material of Radiator:	TUBE
Radome material:	Fiberglass

Environmental

Operating Temperature:	-40℃~+80℃
Storage Temperature:	-40℃~+80℃

- \*Option of Color

☐
- \*Option of Cable Length

☐
- \*Option of Connector Type

☐

EA2-0287

Specifications

VSWR:	<1.5
Gain:	8.0dBi
Impedance:	50Ω
Polarization:	Vertical
Frequency:	860~930 MHz
Antenna Connector Type:	N-type Male

Mechanical performance

Installation method:	Pole-holding
Hoop size:	Small 17-22mm; Large 22-52mm

Environmental

Operating Temperature:	-20℃~+80℃
Storage Temperature:	-30℃~+85℃

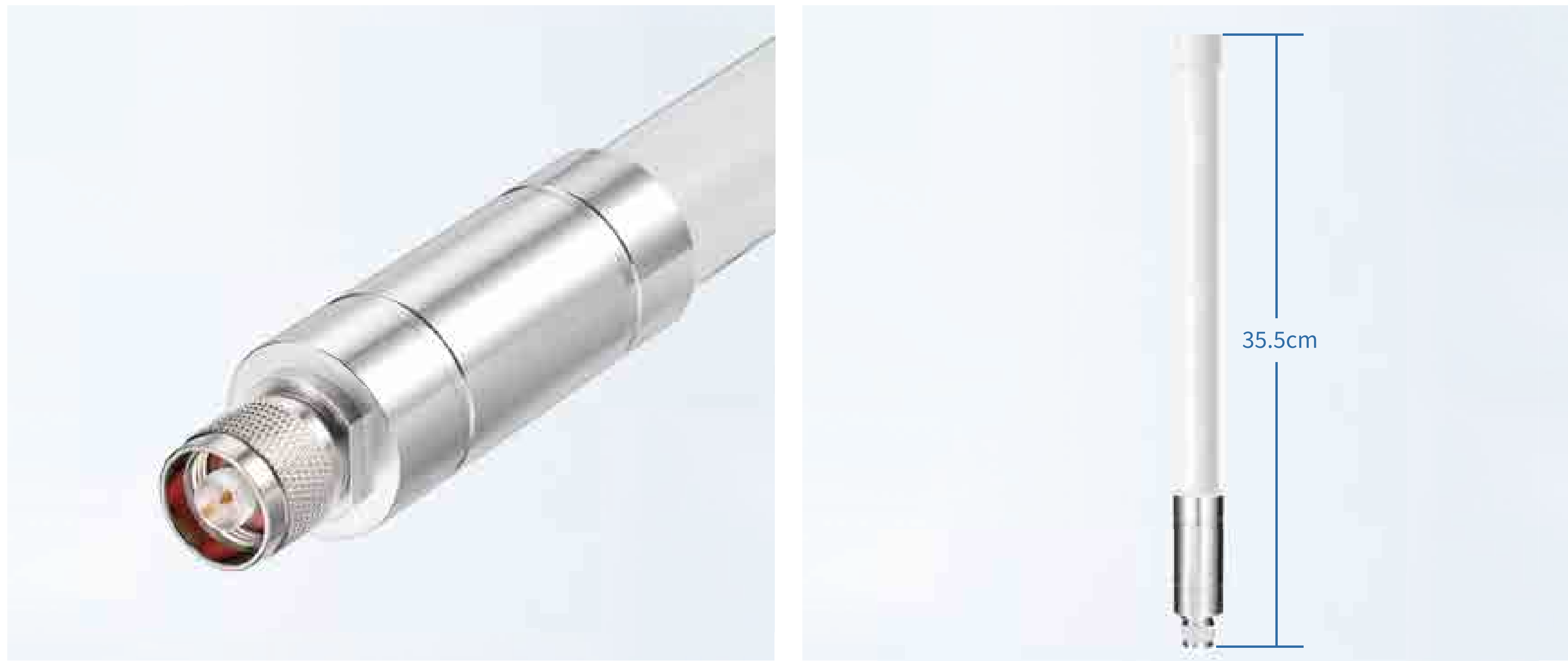
- \*Option of Cable Color

☐
- \*Option of Connector Type

☐







EA2-0289

Electrical Characteristics

VSWR:	≤2.5
Gain:	5.1~5.8dBi
Efficiency:	75%
Impedance:	50Ω
Frequency:	860~930 MHz

Mechanical performance

Length:	35.5cm
Salt Spray Test:	96H
Structure:	Fiberglass

Environmental

Operating Temperature:	-20℃~+65℃
Storage Temperature:	-30℃~+75℃

- \*Option of Cable Color☐
- \*Option of Connector Type☐

EA2-0292

Electrical Characteristics

VSWR:	≤2.5
Gain:	5.1~5.8dBi
Efficiency:	75%
Impedance:	50Ω
Frequency:	860~930 MHz

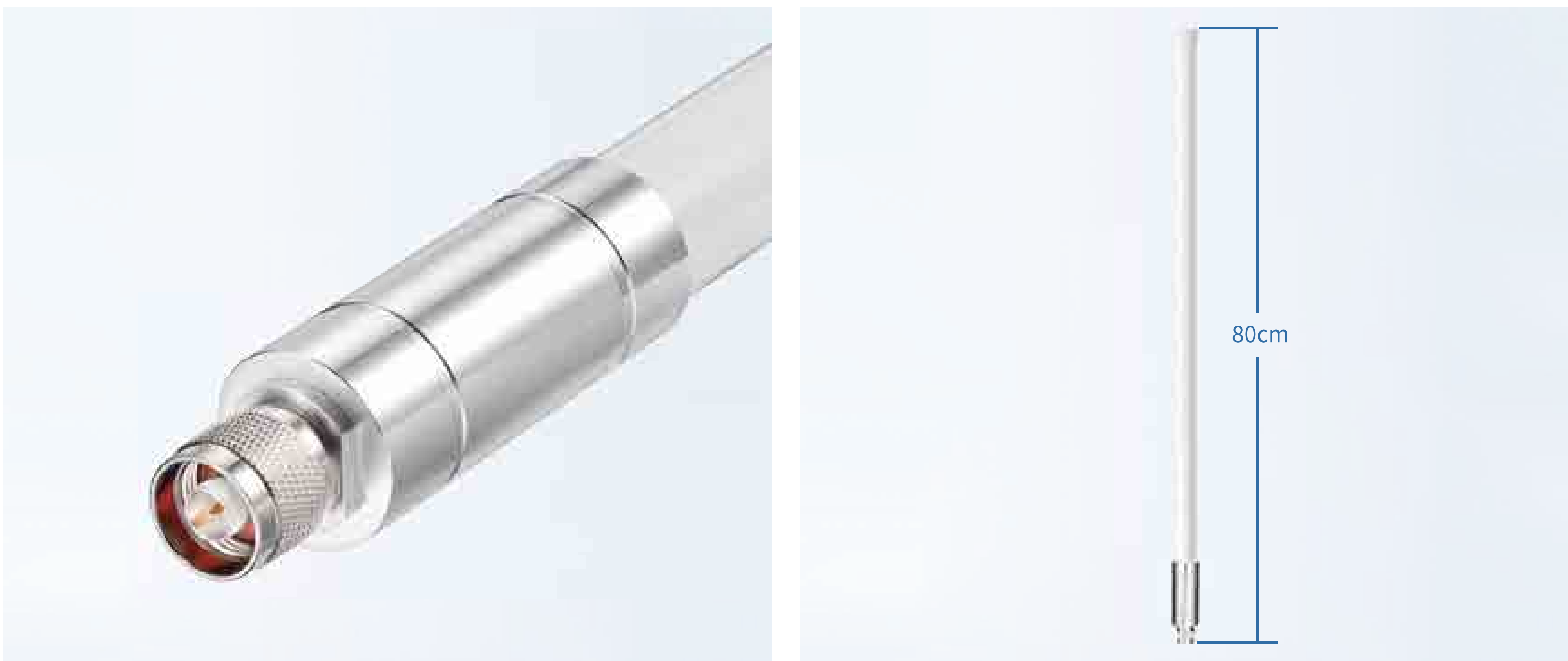
Mechanical performance

Length:	80cm
Salt Spray Test:	96H
Structure:	Fiberglass

Environmental

Operating Temperature:	-20℃~+65℃
Storage Temperature:	-30℃~+75℃

- \*Option of Cable Color☐
- \*Option of Connector Type☐







EA2-0293

Electrical Characteristics

VSWR:	≤2.0
Gain:	3.5dBi
Impedance:	50Ω
Polarization:	Linear
Frequency:	860~915 MHz

Mechanical performance

Installation method:	Pole-holding
Hoop size:	Small 17-22mm; Large 22-52mm

Environmental

Operating Temperature:	-20℃~+80℃
Storage Temperature:	-30℃~+85℃

- \*Option of Cable Color

☐
- \*Option of Connector Type

☐

EA2-0310

Electrical Characteristics

VSWR:	≤2.5
Gain:	5.8dBi
Impedance:	50Ω
Polarization:	Vertical
Frequency:	900~930 MHz

Mechanical performance

Dimension:	80.5cm
Connector:	N male
Structure:	Fiberglass

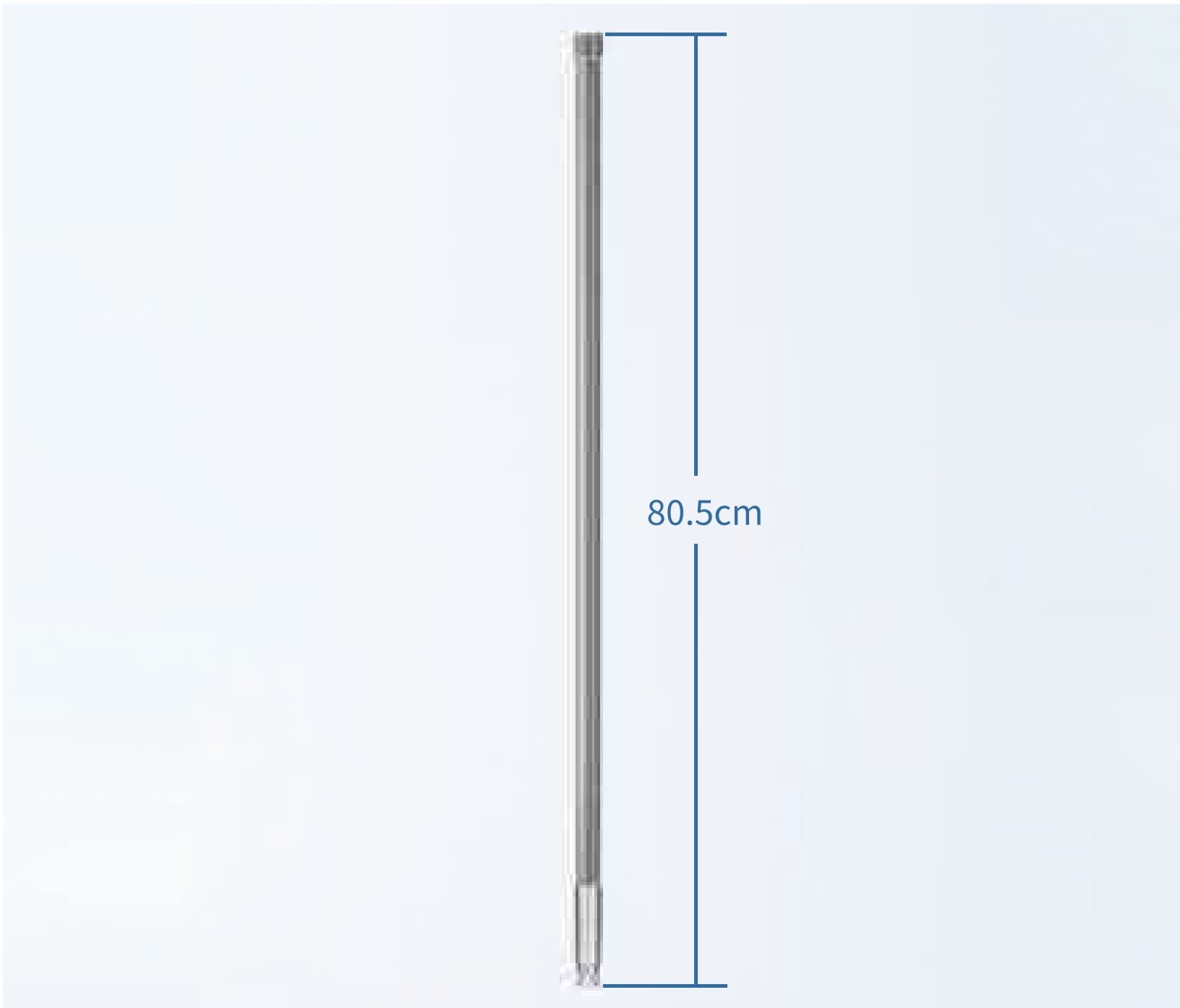
Environmental

Operating Temperature:	-20℃~+80℃
Storage Temperature:	-30℃~+85℃

- \*Option of Cable Color

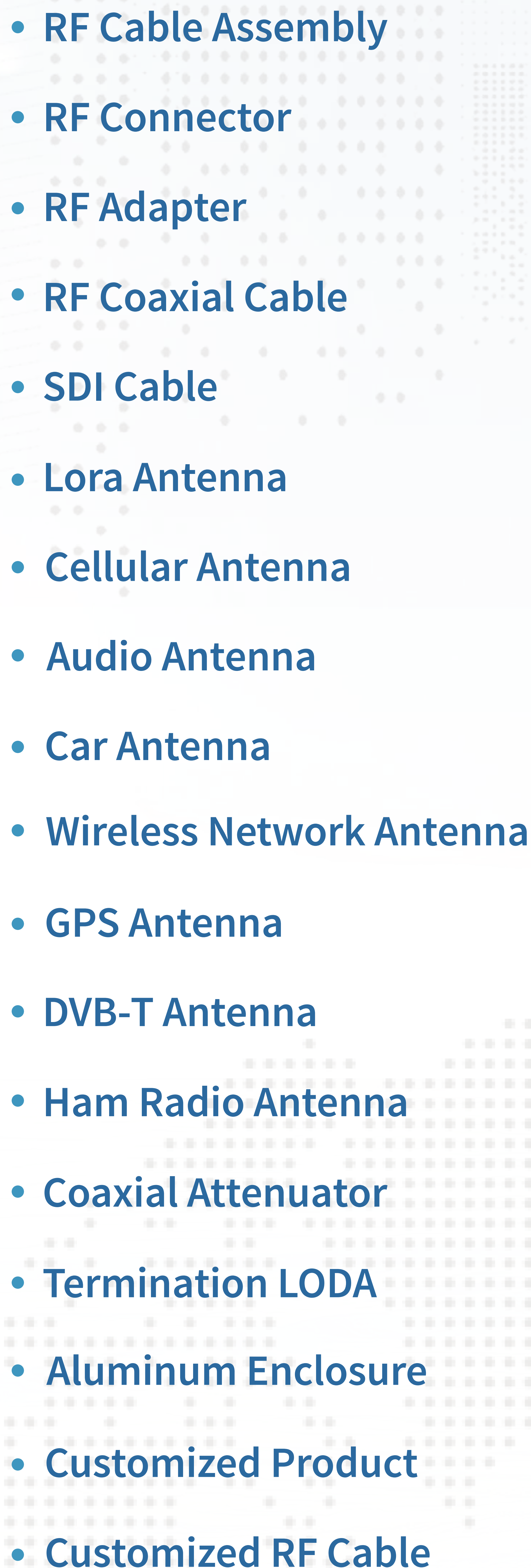
☐
- \*Option of Connector Type

☐





## Our other product categories

- 
- RF Cable Assembly
  - RF Connector
  - RF Adapter
  - RF Coaxial Cable
  - SDI Cable
  - Lora Antenna
  - Cellular Antenna
  - Audio Antenna
  - Car Antenna
  - Wireless Network Antenna
  - GPS Antenna
  - DVB-T Antenna
  - Ham Radio Antenna
  - Coaxial Attenuator
  - Termination LODA
  - Aluminum Enclosure
  - Customized Product
  - Customized RF Cable







  
***superbat***

**Shenzhen Superbat Electronics Co., Ltd**

501A, workshop 6, jianghao(Bantian)industrial plant, No.430, jihua Road, Bantian community,  
Bantian street, Longgang District,Shenzhen City.